

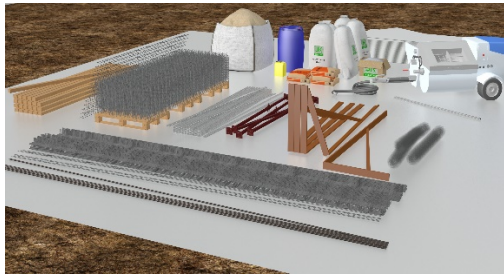
**JK STRUCTURE HOUSES ARE STEEL REINFORCED CONCRETE HOUSES BUILT ON SITE WITHOUT FORMWORK FROM LOAD-BEARING WALLS AND SLABS INCORPORATING CONCEALED COLUMNS AND BEAMS AND BRACING SYSTEM.**

[www.jk-structure.com](http://www.jk-structure.com)

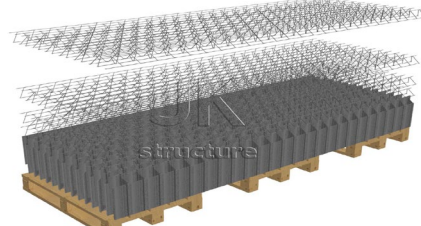
[structurejk@gmail.com](mailto:structurejk@gmail.com)

+44 7785 361548

+33 6 17866203



SUMMARY OF ALL REQUIRED COMPONENTS



THE JK STRUCTURE PANELS



ASSEMBLED PANELS AND BEAMS



INJECTING THE WALLS



THE CONCRETED GROUND FLOOR

NB : THE JK STRUCTURE PANELS ARE 8CM THICK GALVANISED 3D PANELS ASSEMBLED WITH GALVANISED STEEL BEAMS (GIRDERS)



ASSEMBLING A JK STRUCTURE SLAB



A CONCRETED SLAB



ASSEMBLING A JK STRUCTURE ROOF



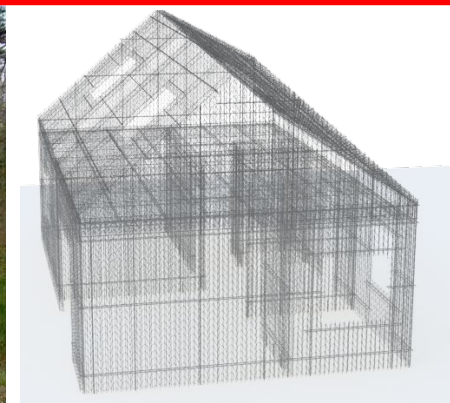
A COMPLETED CONCRETE HOUSE



THE MONOLITHIC CONCRETE RAW HOUSE



THE TURNKEY FINISHED HOUSE



RADIOGRAPHY OF THE STEEL STRUCTURE

[www.jk-structure.com](http://www.jk-structure.com)

[structurejk@gmail.com](mailto:structurejk@gmail.com)

+44 7785 361548

+33 6 17866203

# JK STRUCTURE HOUSES

BUILDING QUASI “CONVENTIONAL” HIGH-QUALITY HOUSES. MADE OF STEEL-REINFORCED AND-EPS-ALLEVIATED-CONCRETE, BUILT ALL ON-SITE, IN A “NON-CONVENTIONAL” HIGH QUALITY AND TIME-LABOUR-LOGISTICS AND HENCE COST-EFFECTIVE WAY

It has become possible thanks to the unique and proprietary JK STRUCTURE Steel Structure System that greatly facilitates, simplifies and speeds up the entire construction process.

JK Structure is both:

- An all-galvanised Expanded-Steel Panel reinforced with Steel Struts serving both as the load-bearing steel structure and as the stay-in-place steel formwork
- A Columns and Beams System and a Bracing System incorporated in load-bearing concrete walls, slabs and roofs.

Combined with EPS-alleviated concrete, to deliver top quality houses.

The same JK STRUCTURE Steel Systems which is so successfully used in heavy engineering and civil engineering applications like road-and-railway tunnels, slopes and embankments, roads, is used here in combination with the EPS-alleviated light-concrete to build the JK STRUCTURE steel-reinforced-alleviated-concrete houses without the need of shuttering or framework.

JK STRUCTURE HOUSES are strong, sound and solid conventional constructions, with good thermal and sound insulation incorporated into the load-bearing structure of the raw house.

The JK STRUCTURE construction process is so time-labour-and-logistics-effective and so simple and easy to implement that it can be used in all locations, and environments. It adapts to all styles, traditions and architectural constraints. They are resistant to earthquakes and hurricanes, insects and rodents.

The JK STRUCTURE construction system is all-on-site, with no prefabricated elements and hence no prefabrication unit and no transportation issues.

It is fast and easy; it requires only small teams of easy and fast to train workers: 4 men, with no prior construction skills and trained on site in only a few days can build the raw house of a 100 m<sup>2</sup> construction in only a week, without major efforts or heavy construction equipment.

JK STRUCTURE houses are built locally, by local contractors and workers after an on-site training provided by JK STRUCTURE Instructors and site managers, so that valuable local jobs can be created.

JK STRUCTURE needs no complex construction equipment or materials, no complex transportation or logistics chain: One truck or container or railway-wagon delivers all the JK STRUCTURE proprietary elements needed for the construction of more than 1,500 m<sup>2</sup> of built-up area, without geographical limitations.

THIS IS WHY JK STRUCTURE, INITIALLY DEVELOPED FOR UPMARKET RESIDENTIAL UNITS IN EUROPE AND FOR SOPHISTIATED CIVIL WORK APPLICATIONS, IS NOW ALSO BEING IMPLEMENTED VERY TIME-LABOUR-LOGISTICS-AND-COST-EFFECTIVELY FOR MIDDLE AND LOW-COST HOUSES AND EVEN FOR MASS-HOUSING PROGRAMS THROUGHOUT THE WORLD

**JK STRUCTURE LIMITED** [StructureJK@gmail.com](mailto:StructureJK@gmail.com) +44 7785 361 548 & +33 617 866 203

[www.JK-Structures.com](http://www.JK-Structures.com) [www.JK-Structure.com](http://www.JK-Structure.com)